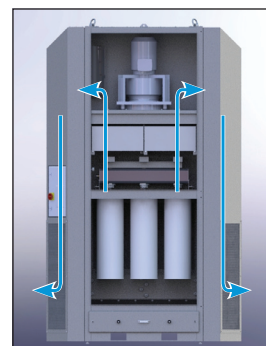




**Indirect collection and removal of fine dry dust and welding fumes to protect the workplace environment and adhere to limit values**



Keller AmbiTower removes particulate from ambient air and returns the purified, cleaned air at minimal velocity back into the plant.

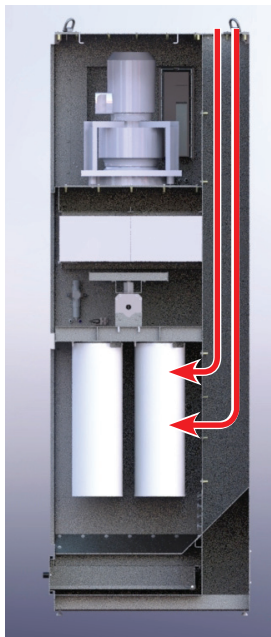
# Indirect workplace exhaustion supplements direct capture at the source

## Protecting employees - compliance with limit values

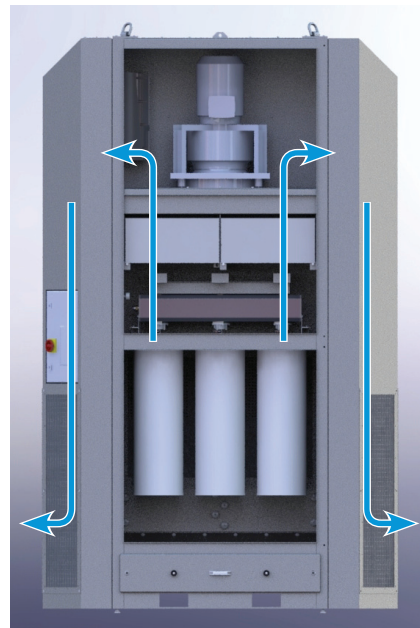
In some processes, direct extraction at the emission source or specific point collection may not be feasible because of the location of the installation. Keller AmbiTower suctions ambient air with a single unit without any ductwork and returns the cleaned, filtered air at low velocity

back into the workplace. This protects staff from residual contaminants and ensures adherence to occupational limit values (1.25 mg/m<sup>3</sup> according to TRGS 900).

## Operational Explanation



Contaminated air inside the plant is suctioned and conveyed into the dirty air zone through an air inlet at the upper portion of the system.

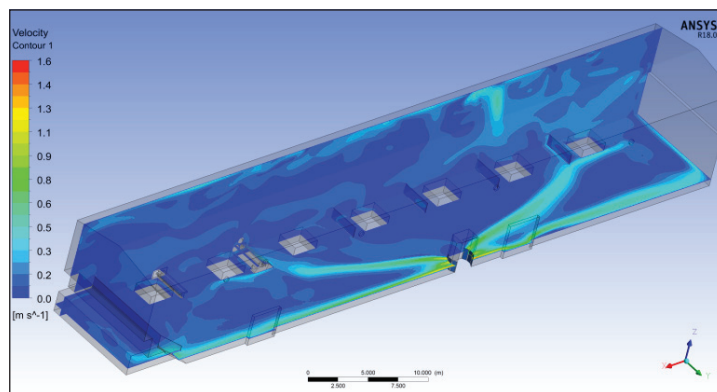


It then passes through filter cartridges and optional secondary filter stages. The purified air is eventually returned into the workplace via side channels at a reduced air flow.

## Advantages

- Energy cost savings achieved using clean air recirculation
- Protection of uncontaminated areas, since airflow disruption rarely occurs
- Plug and Play: easy commissioning, since no ductwork is required
- Heavy-cargo eyes and forklift transport for easy installation
- Sturdiness and durability ensured by solid 2 mm industrial design

## Taking into consideration the air distribution

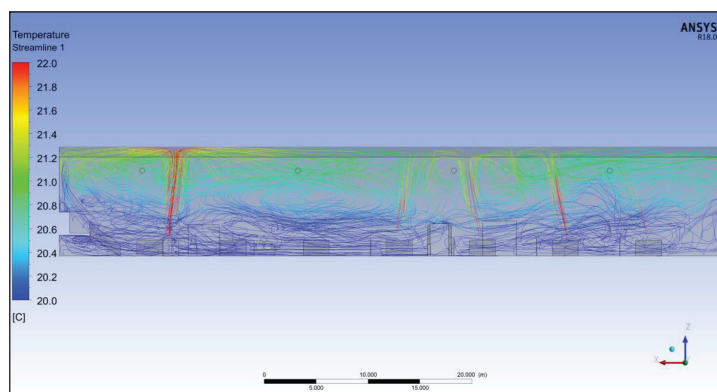


Air speed and distribution in the workshop

The system should be positioned to ensure optimal air distribution of the recirculated air adjoining the pathways.

Please ensure that no work stations are located adjacent to the air outlet. They would hamper air circulation and negatively impact employee comfort due to increased air flow directly at the outlet.

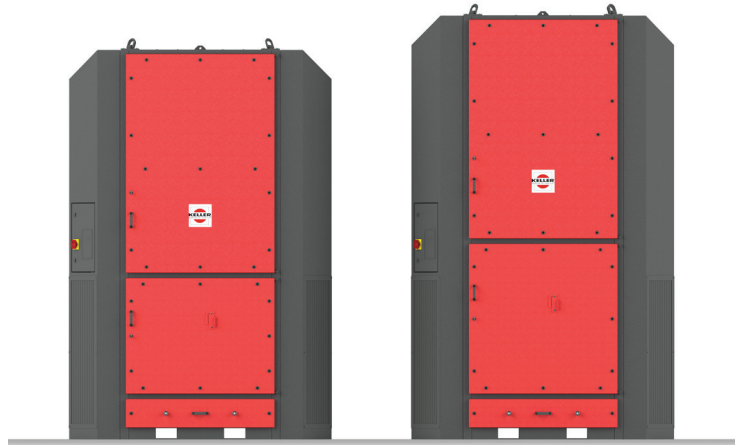
## Take into account the height of the ceilings



Temperature distribution and layered ventilation

A height of  $\geq 6$  m is required for adequate layering of the purified and contaminated air. Individual consultation is required for lower ceiling heights.

## Technical data



	<b>AmbiTower 10</b>	<b>AmbiTower 15</b>
<b>Operating air flow [m³/h]</b>	10 000 m³/h	15 000 m³/h
<b>Nominal air flow [m³/h]</b>	6 000 m³/h – 14 000 m³/h	10 000 m³/h – 17 000 m³/h
<b>Filter surface [m²]</b>	90	144
<b>Number of filters [pcs]</b>	6	6
<b>Motor [kW/V/Hz]</b>	7.5 / 400 / 50	11 / 400 / 50
<b>Filter material</b>	IFA dust category M	IFA dust category M
<b>Filtration efficiency</b>	>99.9%	>99.9%
<b>Compressed air [bar]</b>	4-6	4-6
<b>Compressed air consumption [NL/pulse]</b>	118	118
<b>Dust container volume [L]</b>	150	150
<b>Noise pressure level [dB(A)]</b>	≤ 75	≤ 75
<b>Weight [kg]</b>	1 700	1 900
<b>Dimensions [WxDxH]</b>	2300 x 1250 x 3400 mm	2300 x 1250 x 3700 mm
<b>Optional secondary filter stage</b>	H13 filtration efficiency > 99.95 %	H13 filtration efficiency > 99.95 %
<b>Transport facilitation</b>	Heavy-duty hoist rings and forklift access	Heavy-duty hoist rings and forklift access

### Keller Lufttechnik GmbH + Co. KG

Neue Weilheimer Str. 30  
 73230 Kirchheim unter Teck  
 Fon +49 7021 574-0 · Fax 52430  
 info@keller-lufttechnik.de  
[www.keller-lufttechnik.de](http://www.keller-lufttechnik.de)